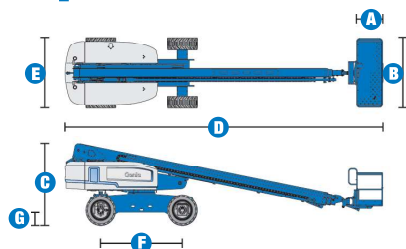


# Specifications



MODELS S™-80			
MEASUREMENTS	Metric	US	
Working height maximum*	26.38 m	86 ft	
Platform height maximum	24.38 m	80 ft	
Horizontal reach maximum	21.79 m	71 ft 6 in	
Below ground reach	1.85 m	6 ft 1 in	
A Platform length - 8 ft model	91 cm	3 ft	
Platform length - 6 ft model	76 cm	2 ft 6 in	
B Platform width - 8 ft model	2.44 m	8 ft	
Platform width - 6 ft model	1.83 m	6 ft	
C Height - stowed	2.80 m	9 ft 2 in	
D Length - stowed	11.13 m	36 ft 5 in	
Length - transport (jib tucked under)			
E Width	2.49 m	8 ft 2 in	
F Wheelbase	2.85 m	9 ft 4 in	
G Ground clearance - centre	33 cm	13 in	

PRODUCTIVITY			
Lift capacity - 6 ft platform	227 kg	500 lbs	
Lift capacity - 8 ft platform	227 kg	500 lbs	
Platform rotation	160°	160°	
Vertical jib rotation			
Turntable rotation	360° continuous		
Turntable tailswing	1.42 m	4 ft 8 in	
Drive speed - stowed	5.4 km/h	3.3 mph	
Drive speed - raised/extended	1.1 km/h	0.68 mph	
Gradeability** - stowed 2WD	30%	30%	
Gradeability** - stowed 4WD	45%	45%	
Turning radius inside	3.66 m	12 ft	
Turning radius outside	6.55 m	21 ft 6 in	
Controls	12 V DC proportional		
Tyres - RT lug	385/65 D22.5		

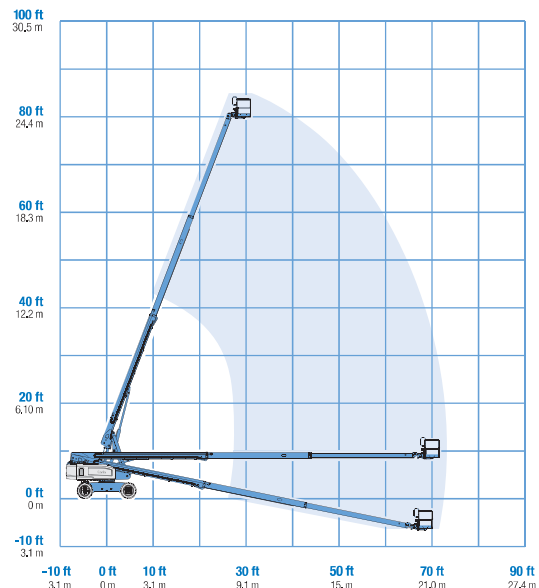
POWER			
Power source	Deutz TD2011 L04i 4 cylinder diesel 74 hp (55 kW) Perkins 804D-33 4 cylinder diesel 63 hp (47 kW) Continental TME27 4 cylinder petrol/LPG 74 hp (55 kW)		
Auxiliary power unit	12 V DC	12 V DC	
Hydraulic tank capacity	151L	40 gal	
Fuel tank capacity (Diesel)	132 L	35 gal	
Fuel tank capacity (Petrol)	114 L	30 gal	

SOUND & VIBRATION LEVELS			
Sound pressure level (ground workstation)	83 dBA	83 dBA	
Sound pressure level (platform workstation)	71 dBA	71 dBA	
Vibration	<2.5 m/s²	<8 ft 2 in/s²	

WEIGHT***			
2WD	16,057 kg	35,400 lbs	
4WD	16,103 kg	35,500 lbs	

STANDARDS COMPLIANCE	CE EN280, PB-10-611-03
----------------------	------------------------

## RANGE OF MOTION S™-80



\* The metric equivalent of working height adds 2 m to platform height. U.S. adds 6 ft to platform height.

\*\* Gradeability applies to driving on slopes. See Operator's Manual for details regarding slope ratings.

\*\*\* Weight will vary depending on options and/or country standards.

## Features

### EASILY CONFIGURED TO MEET YOUR NEEDS

#### PLATFORM OPTIONS

- Steel 2.44 m (8 ft) (standard)
- Steel 1.83 m (6 ft)
- Steel 2.44 m (8 ft) tri-entry

#### JIB OPTIONS

- Non-jib
- 1.52 m (5 ft) jib boom

#### POWER OPTIONS

- Deutz turbocharged diesel 74 hp (55 kW)
- Perkins diesel 63 hp (50 kW)
- Continental petrol/LPG 74 hp (56 kW)

#### DRIVE OPTIONS

- 2 x 4
- 4 x 4

#### AXLE

- Fixed width with active oscillation

#### TYRE OPTIONS

- Rough terrain, foam-filled (standard)
- Rough terrain, non-marking foam-filled

### STANDARD FEATURES

#### MEASUREMENTS

##### S<sup>TM</sup>-80

- 26.38 m (86 ft) working height
- 21.79 m (71 ft 6 in) horizontal reach
- 227 kg (500 lb) lift capacity

#### PRODUCTIVITY

- Self-levelling platform
- Hydraulic platform rotation
- Fully proportional Hall effect joystick controls
- Thumb rocker steer
- Drive enable
- AC power to platform
- Horn
- Hour meter
- Tilt alarm
- Descent alarm
- 360° continuous turntable rotation
- Locking low profile turntable covers
- Positive traction drive
- Two speed wheel motors
- Certified load sensor

### STANDARD FEATURES

#### POWER

- All engines are emissions compliant
- 12 V DC auxiliary power
- Anti-restart engine protection
- Auto engine fault shutdown
- Catalytic converter muffler
- Engine block heater (Continental)



### OPTIONS & ACCESSORIES

#### PRODUCTIVITY

- 340 kg (750 lb) capacity S<sup>TM</sup>-80 only
- Platform swing gate
- Half mesh platform inserts with swing gate
- Platform top auxiliary rail
- Air line to platform
- Hydraulic oil cooler
- Fire resistant hydraulic oil
- Biodegradable hydraulic oil
- Basic hostile environment kit
- Deluxe hostile environment kit
- Aircraft protection package (6 ft platform only)
- Tool tray
- Fluorescent tube caddy\*\*
- Pipe cradle (pair)\*\*
- Alarm package (flashing beacon and travel alarm)
- Panel cradle package\*
- Platform work lights
- Lockable platform control box covers
- Second battery
- Tow package
- Weld leads to platform

#### POWER

- Engine gauge package
- AC generator packages (110V/60Hz, 3000 W or 220V/50Hz, 2500 W)
- Cold weather packages
- Diesel scrubber muffler with spark arrestor
- Intake air precleaner
- Additional LPG tank with carrier\*\*

\* Available on tri-entry basket model only

\*\*Available aftermarket only

### Enquiries from Europe:

Tel: +31 165 519 361  
Fax: +31 165 511 148  
Email: AWP-InfoEurope@terex.com

### Offices:

#### France

Tel: +33 (0)2 37 26 09 99  
Fax: +33 (0)2 37 26 09 98

#### Germany

Tel: +49 (0)4221 491 810  
Fax: +49 (0)4221 491 820

#### Spain

Tel: +34 93 572 50 90  
Fax: +34 93 572 50 91

#### Scandinavia

Tel: +46 31 57 51 00  
Fax: +46 31 57 51 04

#### The Netherlands

Tel: +31 165 519 361  
Fax: +31 165 511 148

#### UK

The Maltings  
Wharf Road  
Grantham NG31 6BH  
UK  
Tel: +44 (0)1476 584333  
Fax: +44 (0)1476 584334

#### Middle East

Tel: +971 4 399 0381  
Fax: +971 4 399 0382  
Email: AWP.Infome@terex.com

### Corporate Headquarters:

#### Genie United States

18340 NE 76th Street  
P.O. Box 97030  
Redmond, WA  
USA 98073-9730  
Tel: +1 425 881-1800  
Fax: +1 425 883-3475

### Distributed By: