

860SJ Telescopic Boom Lift

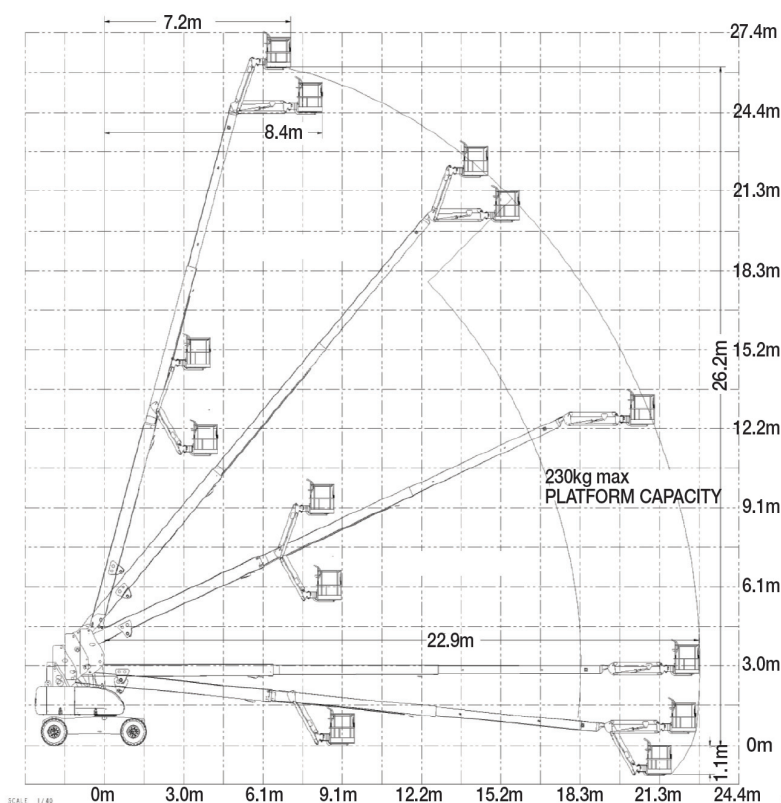


QUESTIONS TO ASK

- What are the ground conditions in the work area?
- What are the site conditions travelling around the site?
- What is the working height needed for the job?
- What is the outreach required for the job?
- Do you need an extension lead outlet in the platform?
- Will an inbuilt Miller 5.5kVA generator make the job easier?

KEY SELLING POINTS

- Smooth control, proportional hydraulic 4 wheel drive, with two speed ranges
- Proportional lift and swing controls at the platform for fast functionality
- Oscillating front steer axle with the boom within 10 degrees of centre, assists 4 wheel drive traction
- Jib boom and basket rotate
- Cylinder boots protect cylinder rods from overspray and contaminants
- Large lug pattern urethane filled tyres
- Multi axis 4 degree level sensor
- Plug in JLG analyser at platform and base to indicate system functions for servicing and adjustment
- Deutz Engine D2011 L04. High speed, 4 cylinder, liquid (oil cooled), 48.5kW engine pre-glow and post-glow feature reduces emissions



SPECIFICATIONS

Performance:

| | |
|-----------------------------|-----------|
| Platform Height (max.) | 26.21m |
| Working Height | 28.21m |
| Platform Rotation Angle | 180° |
| Jib Raise Angle | 70° |
| Jib Lower Angle | 60° |
| Jib Articulation Range | 130° |
| Maximum Horizontal Outreach | 22.86m |
| Lift Time | 56-73 sec |
| Lower Time | 56-73 sec |
| Platform Capacity | 230kg |
| Slewing Angle | 360° |
| Continuous Slew | Yes |

Dimensions:

| | |
|---------------------------|--------|
| Stowed Length | 12.19m |
| Stowed Height | 3.05m |
| Overall Width | 2.49m |
| Wheelbase | 3.05m |
| Ground Clearance | 0.30m |
| Platform Width | 2.44m |
| Platform Length | 0.91m |
| Overall Jib Length | 1.83m |
| Tailswing | 1.42m |
| Axle Oscillation Standard | Std |

Power:

| | |
|-----------------|---------------|
| Power Source | Diesel |
| Engine Make | Deutz |
| Engine Model | D2011 L04 |
| Engine Power | 48kW |
| Genset | 5.5kVA Miller |
| DC Voltage | 12V |
| DC Power | 1000CCA |
| Auxiliary Power | 12V Pump |

Travel:

| | |
|---------------------------------|------------------------|
| Tyre Size | 15-625 |
| Tyre Type | Urethane Filled |
| Inside Turn Radius | 3.66m |
| Outside Turn Radius | 6.86m |
| Drive Speed Elevated | 0.8km/h |
| Gradeability with 4WD | 45% |
| Drive Speed - 4WD | 5.6km/h |
| Maximum Ground Bearing Pressure | 5.69kg/cm ² |

Weights and Capabilities:

| | |
|-------------------------|------------|
| Fuel Tank Capacity | 117.35 Ltr |
| Hydraulic Tank Capacity | 181.7 Ltr |
| Operating Weight | 17,200kg |