

Specifications

Models S-65 XC & S-65 TraX

Measurements	Metric	US
Working height maximum*	21.81 m	71 ft
Platform height maximum	19.81 m	65 ft
Horizontal reach maximum	16.51 m	54 ft 2 in
Below ground reach	2.65 m	8 ft 8 in
A Platform length - 8 ft model	0.91 m	3 ft
Platform length - 6 ft model	0.76 m	2 ft 6 in
B Platform width - 8 ft model	2.44 m	8 ft
Platform width - 6 ft model	1.83 m	6 ft
C Height - stowed, tyres	2.81 m	9 ft 3 in
Height - stowed, TraX	2.81 m	9 ft 3 in
D Length - stowed, tyres	9.76 m	32 ft
Length - stowed, TraX	9.76 m	32 ft
Length, transport (jib tucked under)	7.80 m	25 ft 7 in
E Width, tyres	2.49 m	8 ft 2 in
Width, TraX	2.58 m	8 ft 5-11/16 in
F Wheelbase	2.50 m	8 ft 2 in
G Ground clearance - center, tyres	0.41 m	16.3 in
Ground clearance - center, TraX	0.41 m	16.3 in

Productivity

Maximum lift capacity - unrestricted	300 kg	660 lbs
- restricted	454 kg	1,000 lbs
Platform rotation	160°	160°
Vertical jib rotation	133° (+ 79° /- 54°)	
Turntable rotation	360° continuous	
Turntable tailswing	1.41 m	4 ft 7.5 in
Drive speed - stowed, tyres	4.8 km/h	3.0 mph
- stowed, TraX	3.7 km/h	2.3 mph
- raised/extended, tyres	0.3 m/s	1 ft/s
- raised/extended, TraX	0.2 m/s	0.7 ft/s
Gradeability - stowed**	45%	45%
Turning radius - inside, tyres	2.40 m	7 ft 9 in
- inside, TraX	3.48 m	11 ft 5 in
Turning radius - outside, tyres	5.50 m	18 ft 2 in
- outside, TraX	6.50 m	21 ft 4 in
Controls	12V DC proportional	
Tyres - RT foam filled	355/55D 625	
TraX - Track system	Vermeer Track System	
Ground pressure, tyres	620 kPa	90 psi
Ground pressure, TraX	170 kPa	25 psi

Power

Power source, tyres	Deutz diesel D2011L03i, 48 hp (36 kW)	
Power source, TraX	Deutz diesel TD 2.9 L4, 74 hp (55kW), Stage IIIB	
Auxiliary power unit	12V DC	12V DC
Hydraulic tank capacity	151 L	40 gal
Fuel tank capacity - diesel	132 L	35 gal

Sound & Vibration Levels

Sound pressure level (ground workstation)	83 dBA	83 dBA
Sound pressure level (platform workstation)	79 dBA	79 dBA
Vibration	<2.5 m/s ²	<8 ft 2 in/s ²

Weight***

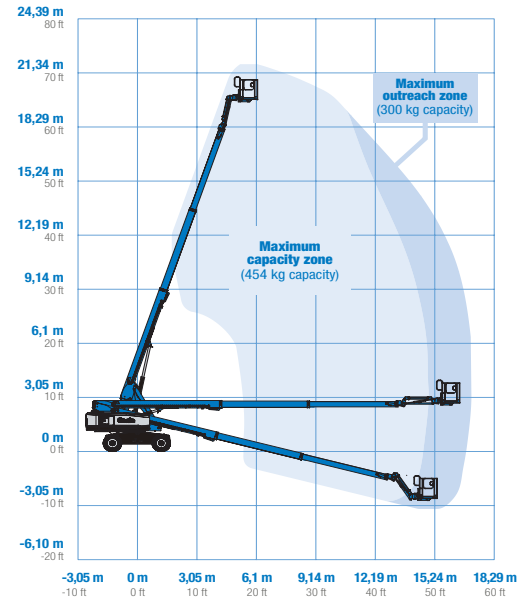
Tyres	11,412 kg	25,160 lbs
TraX	13,154 kg	29,000 lbs

Standards Compliance

standard EN280);
(Outdoor Noise)

EU Directives: 2006/42/EC - Machinery (harmonized
2004/108/EC (EMC); 2000/14/EC

Range Of Motion S-65 XC & S-65 TraX



* The metric equivalent of working height adds 2 m to platform height. U.S. adds 6 ft to platform height.

** Gradeability applies to driving on slopes. See operator's manual for details regarding slope ratings.

*** Weight will vary depending on options and/or country standards.

